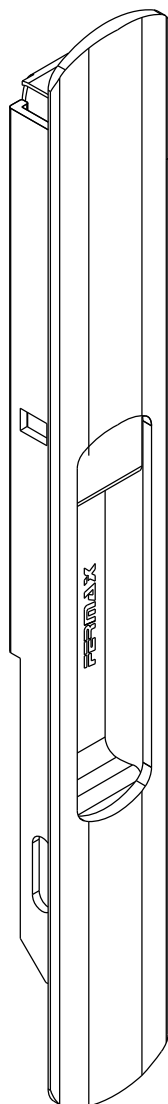


CORRER

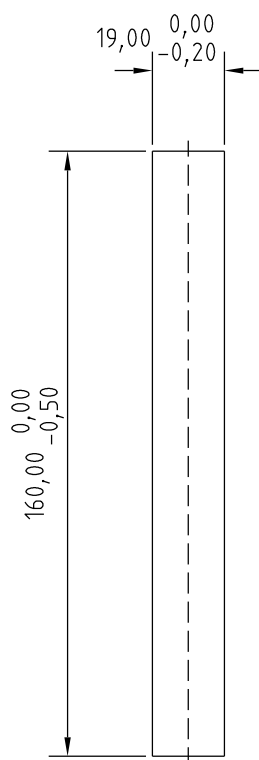
CONCHA CEGA S/ FIX. APARENTE - CON06S

COMPOSIÇÃO:
ESTRUTURA EM ALUMÍNIO
TRAVA EM POLIAMIDA

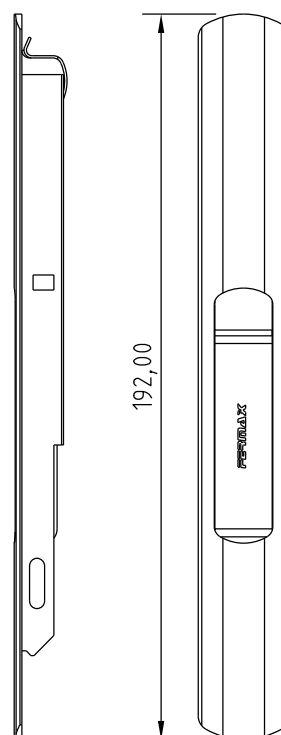
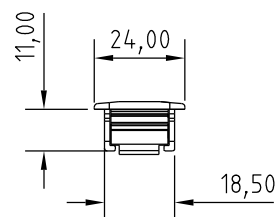
EMBALAGEM:
PACOTE C/ 01 PÇ



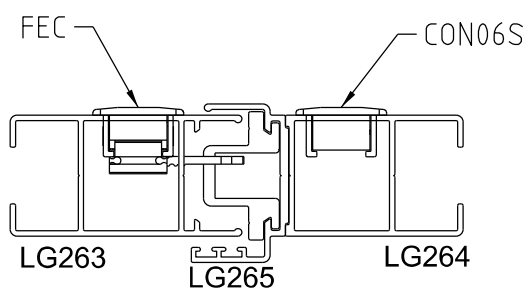
CON 06S



Usinagem - escala 1:2



VISTAS
ESCALA 1:2



INSTALAÇÃO
Linha GOLD SLIM
HIDRO SAPA
ESCALA 1:2