

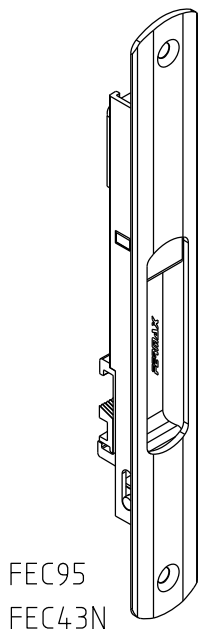
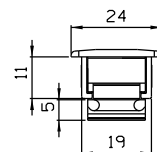
CORRER

FECHO CONCHA 192mm - FEC43N/45N/95/96

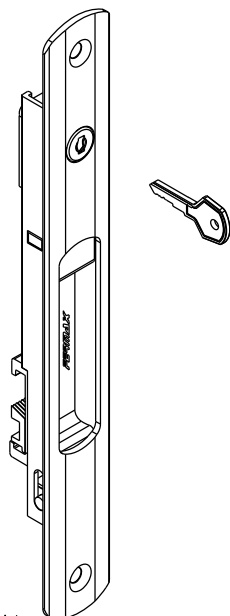
COMPOSIÇÃO:
ESTRUTURA EM ALUMÍNIO
LINGUETA EM ZAMAK
MOLA EM AÇO (FEC43N E 45N)
PARAFUSOS EM AÇO INOX

INFORMAÇÕES
LINGUETA E CONTRA FECHO
VENDIDOS SEPARADAMENTE

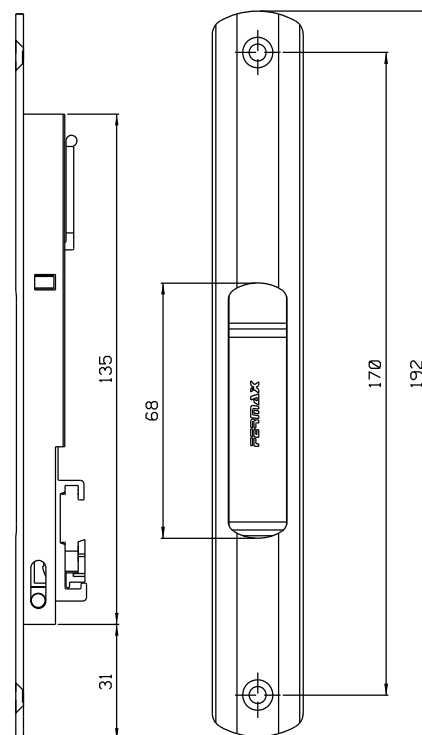
EMBALAGEM:
PACOTE C/ 01 PÇ



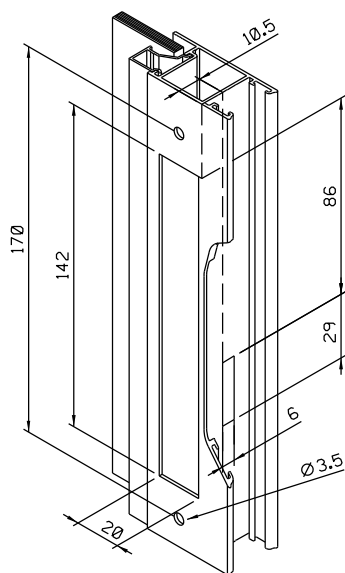
FEC95
FEC43N



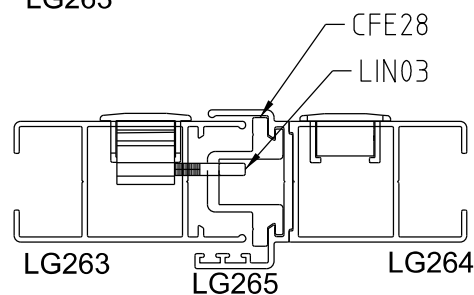
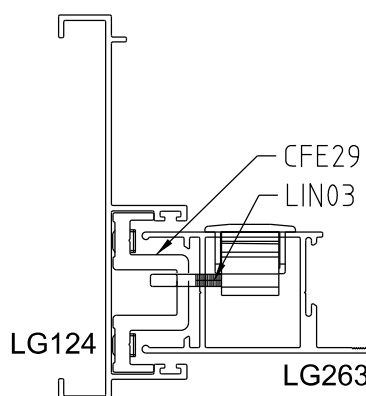
FEC96
FEC45N



Vista - escala 1:2



Usinagem para instalação
Sem escala



INSTALAÇÃO
Linha GOLD SLIM
HIDRO SAPA
ESCALA 1:2