

CORRER

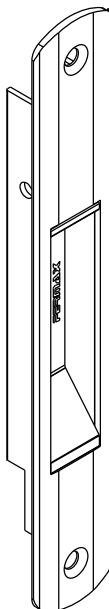
FECHO E PUXADOR EASY TOUCH - FEC129 E CON09

COMPOSIÇÃO:
ESTRUTURA EM ALUMÍNIO
LINGUETA EM ALUMÍNIO
MOLA EM AÇO
PARAFUSOS EM AÇO INOX

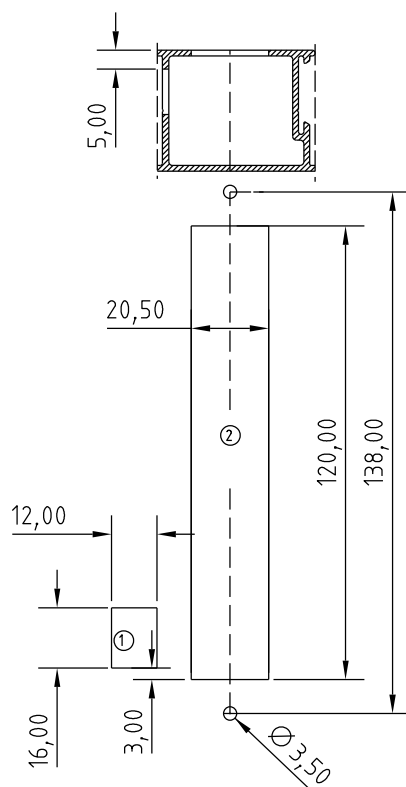
INFORMAÇÕES
LINGUETA E CONTRA FECHO
VENDIDOS SEPARADAMENTE

EMBALAGEM:
PACOTE C/ 01 PÇ

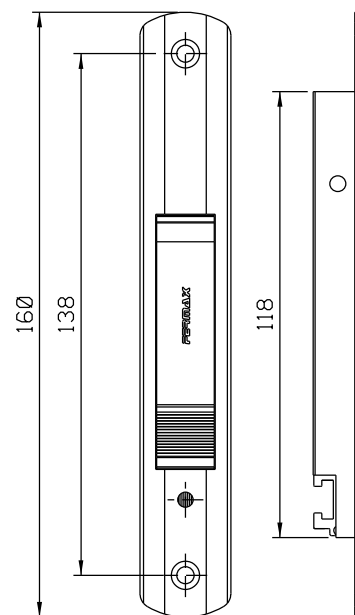
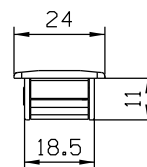
FEC129



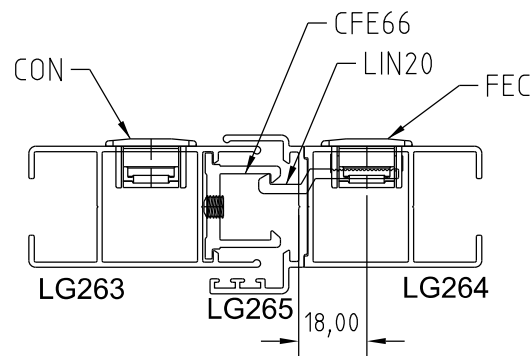
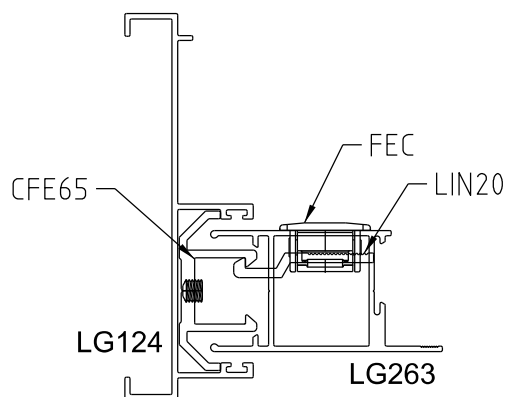
CON09



USINAGEM - ESCALA 1:2



VISTAS - ESCALA 1:2



INSTALAÇÃO
Linha GOLD SLIM
HIDRO SAPA
ESCALA 1:2