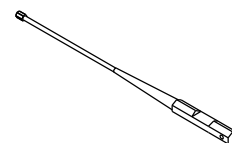




MTI019 (1X)



Chave de regulagem
acompanha o motor



Product Preview NR1 Motor Kit

DATE

SIGNATURE

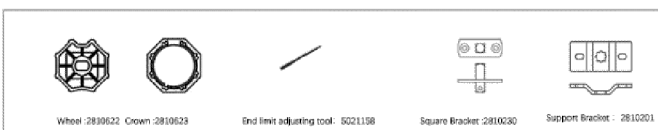
APPROVED BY CUSTOMER

MCR03012 (1X)

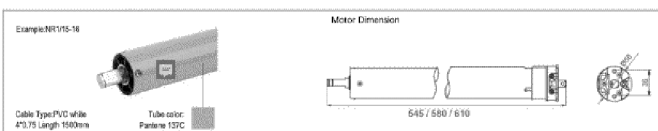
Ø45-Tubular Motors Wired

REF. (PART NUMBER)	PRODUCT DESCRIPTION	WHEEL (mm)	WHEEL (mm)	VOLTAGE	POWER (W)	CURRENT (A)	PERMANENT TORQUE (kg)	PROTECTION DEGREE	IP	WHEEL LENGTH (mm)
2811543	NR115-15	15	15	230V~50Hz	150	0.70	4	IP44	30	502
2811544	NR115-18	18	18	230V~50Hz	150	0.70	4	IP44	30	502
2811545	NR115-18	18	18	230V~50Hz	150	0.70	4	IP44	30	502

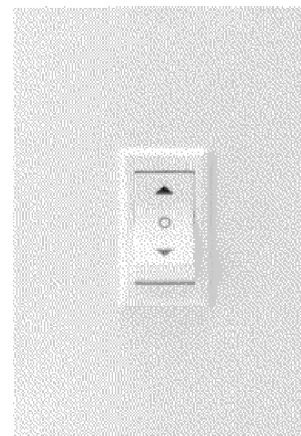
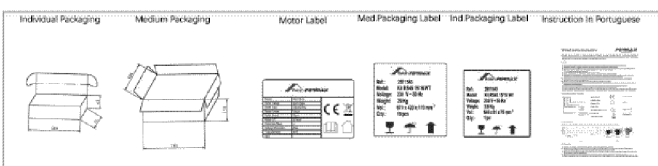
Motor Package Configuration



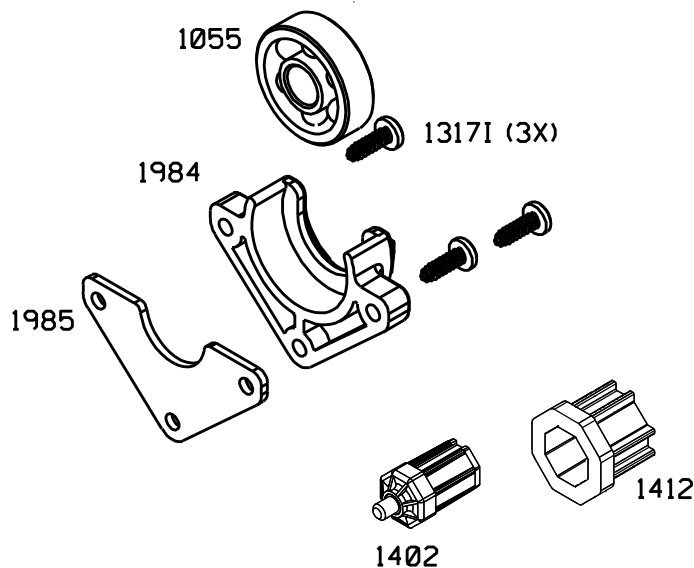
Motor Information



Packaging Information



BOT01 (2750)



Observações: SUBSTITUTO MTI45220B

Material		Materia-Prima ou Liga		Acabamento			2158 g
							% Máximo de Reciclado NÃO APLICA
8				Projeto	19/01/2026	GODOI.R	Tolerância Dimensional: DIN 16901
7				Aprovado	19/01/2026	GODOI.R	
6				Tratamento			
5				Escala			
4				S/E			
3				Unidade : mm			
2							
1	Sobrenome N.		00/00/0000				
Rev. Nº		Revisão		Data		Código	
				Roto FERMAT		Folha 1/1	
						MTI027	